



Government of South Australia
Department for Education

NEWSLETTER



Find us on Facebook

Principal: Linda Ritchie
Deputy : Lexia Fullerton
Student Wellbeing : Sylvia Jadrych
Aboriginal Education Leader: Sophia Crewdson

Phone: 86422722

**NO
PARKING**

Car Park

The car park near the front office is strictly for staff only. Families are NOT PERMITTED to use this car park, even for short periods, to drop off or pick up children. The bottom car park (near the Old Special School) can be used for this purpose as well as parking available on the roads around the school. We thank you for your cooperation in keeping ALL CHILDREN SAFE.

**NO
PARKING**



SRC Members
Pictured at the Planet
Ark Tree Planting Day
held at Arid Lands
Botanic Garden on
Friday 26th July



Diary Dates for Term 3

- Hot Shots Tennis - Tues 6/8 & Wed 7/8
- Student Free Day - Friday 9/8
- Parent Voice Meeting - Monday 12/8
- National Week of Action against Bullying & Violence - starts Monday 12/8
- Police Talk followed by Yr 6s v Police Staff Golden Child Game - Thursday 15/8
- Book Week begins - Monday 19/8
- Whole School Assembly - Wednesday 21/8
- District Sports Day - Friday 23/8
- PASS Sports Day - Wednesday 4/9

Occasional Care at Willsden Kindy.

There are a few spots for Occasional Care this term if you are looking for 3 hours of care for your child aged between 2 and 4.

This is a great stepping stone and opportunity for your child to be in an engaging learning environment.

Please ring Tammy at the Kindy on 86 422 761



Don't forget to like us on Facebook

DEADLY DOORS

As part of National NAIDOC Week celebrations, each class designed and decorated their door to the theme of 'Keep the fire burning! Loud, Blak and Proud. NAIDOC week is an opportunity for all Australians to learn about First Nations cultures and histories and participate in celebrations of the oldest, continuous living cultures on earth.

For best door, students were awarded a class party which was held in Week 1.

Congratulations Room 5 and Room 15 on winning the class parties.



WINNER

WINNER – ROOM 5 MISS CHLOE'S CLASS



ROOM 8 MX CHELS'S CLASS



ROOM 6 MISS FINCH'S CLASS

DEADLY DOORS



ROOM 13 MISS CLARE'S CLASS

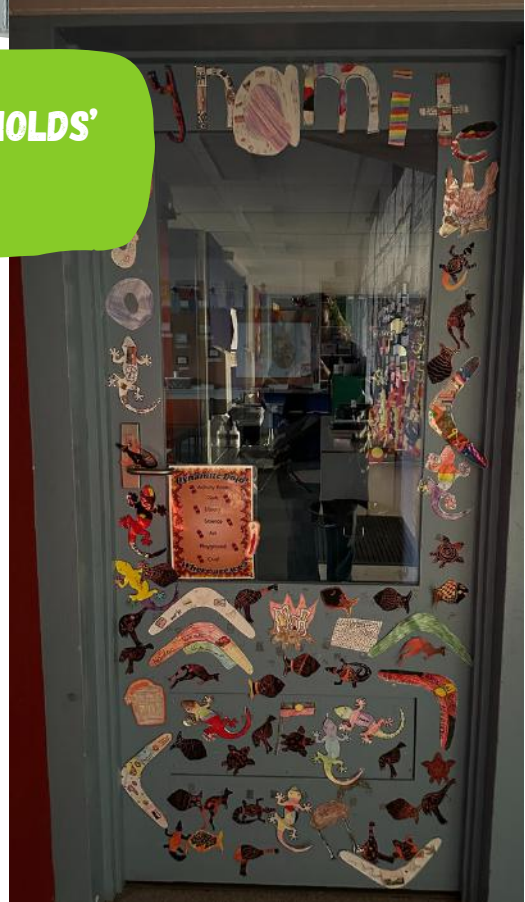


ROOM 15 MR REYNOLDS' CLASS



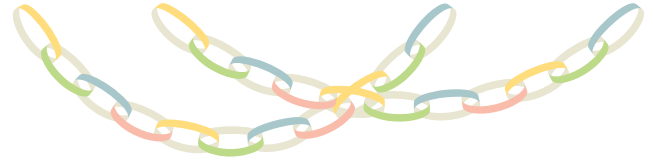
WINNER

WINNER - ROOM 14 MISS MEL'S CLASS



Room 13

Paper chain challenge

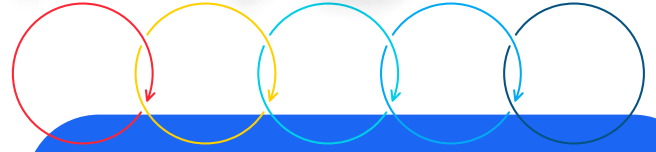


Students had to work in pairs to create the longest paper chain. It was great to hear their mathematical reasoning as they debated which methods would be most effective. It was also an excellent activity to support our multiplication and division learning.



Room 13

100 metre dash



In the spirit of the Olympics, students battled in out for gold in the 100-metre sprint. Students timed their runs and compared their results against both Australian and World record holders. The gold medal for boys went to Tate Warren with an impressive time of 19.10 seconds. For the girls, no one stood a chance against our gold medal winner Kalara Treloar, who finished the sprint in 19.61seconds.



Around the school

Parent Calendar-for your Fridge

Willsden Primary School - Term 3 2024

| | Monday | Tuesday | Wednesday | Thursday | Friday | Sat/Sun |
|-------|---|---------------------------|--|---------------------|---|--------------------------------|
| wk 1 | 22/7 | 23/7 | 24/7 | 25/7 | 26/7 National Tree Day Excursion SRC Reps | 27/7 & 28/7 |
| wk 2 | 29/7 | 30/7 | 31/7 | 1/8 | 2/8 | 3/8 & 4/8 |
| wk 3 | 5/8 | Year 3/4 Hot Shots Tennis | Year 5/6 Hot Shots Tennis | 8/8 | 9/8 Student Free Day | 10/8 & 11/8 |
| wk 4 | 12/8 National Week of Action against Bullying & Violence Parent Voice Meeting | 13/8 | 14/8 | 15/8 Police Talk | 16/8 | 17/8 & 18/8 |
| wk 5 | 19/8 Book Week | 20/8 | 21/8 Assembly - Mr Chels Hosting | 22/8 | 23/8 District Sports Day | 24/8 & 25/8 |
| wk 6 | | 27/8 | 28/8 | 29/8 | | 31/8 & 1/9 Father's day |
| wk 7 | 2/9 | 3/9 | 4/9 PASS Sports Day Year 6 Students | 5/9 | 6/9 | 7/9 & 8/9 |
| wk 8 | 9/9 Parent Voice Meeting | 10/9 | 11/9 Assembly - Mr Reynolds Hosting | 12/9 SPORTS DAY | 13/9 School Closure | 14/9 & 15/9 |
| wk 9 | 16/9 | 17/9 | 18/9 Year 5/6 Camp Pichi Richi Park | 19/9 | 20/9 | 21/9 & 22/9 |
| wk 10 | 23/9 | 24/9 | 25/9 | 26/9 | 27/9 Last Day of Term Early Dismissal | 28/9 & 29/9 School Holidays |