



Government  
of South Australia  
Department for Education

# NEWSLETTER

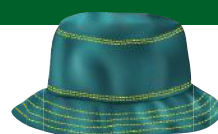


Find us on  
Facebook

**Principal: Linda Ritchie**  
**Deputy : Lexia Fullerton**  
**Student Wellbeing : Sylvia Jadrych**  
**Aboriginal Education Leader: Sophia Crewdson**

**Phone: 86422722**

## IMPORTANT NOTICE



In Term 4 all students will **need to wear a broad rimmed/bucket hat during playtime** to protect them from the harmful effects of the sun.

Students have all been informed by their teachers, and families have been notified through a newsletter and through our school face book page.

We provided the first week of this term as a 'grace period' to provide opportunities for families and students to organise a hat for school.

This week our **hat policy** has come into place and students who do not have a hat will be directed under shade in the Quad area.

Please note that we will no longer be providing spare hats from the front office to ensure we do not spread head lice when experiencing outbreaks in the school.

Thank you for supporting your child to bring a hat to school every day so they can access a variety of play areas during break times.

School hats can be purchased at the front office for the small cost of \$8 or your children may choose to wear their own wide rimmed or bucket hat.

**REMINDER**

A friendly reminder that crocs, thongs and slides are not appropriate footwear for school. We ask that they not be worn to school, if they are your child will be unable to play on the playground or participate in PE.



As the weather is getting warmer this term, the upper primary SRC students along with Marsha & Trisha have been selling ice blocks at school. Funds raised will pay for the ice-blocks and any profits will go towards Splash Day. Thank you to everyone that has supported the initiative we have sold 174 ice-blocks within 4 days.

## Diary Dates for Term 4

- PASS Science Lesson, Year 6s - Tues 29/10
- SAPSASA Volleyball - Friday 1/11
- Parent Voice Meeting, - Mon 4/11
- Swimming Lessons commences - Mon 4/11 (Week 4 & 5)
- Books in Homes Book Giving Assembly - Wed 13/11
- Student Free Day - Friday 22/11
- Cricket session - Friday 29/11

# Around the school

## CINEMA VISIT

On Friday, 27th September, students and staff celebrated reaching 80% attendance for term 3 with an excursion to Cinema Augusta to watch 'The Wild Robot'. The event recognised everyone's commitment to improving attendance and was a fun way to celebrate this great achievement together.



Our focus on improving attendance will continue. We will be having Splash Day in Week 9 and all students who improve their attendance in Term 4 will be able to celebrate this fantastic achievement.

# AUTISM NEWS

## Neuroaffirming Classrooms - A Takeaway from AIT Conference

I had an opportunity to attend the Autism Inclusion Teacher (AIT) Conference in Adelaide amongst many AITs across the state. It was inspiring and meaningful to learn so much from diverse presenters who shared their lived experiences of being; autistic, non-speaking, ADHD, dyslexic and a parent of neurodivergent children etc. I would like to share one takeaway from the day.

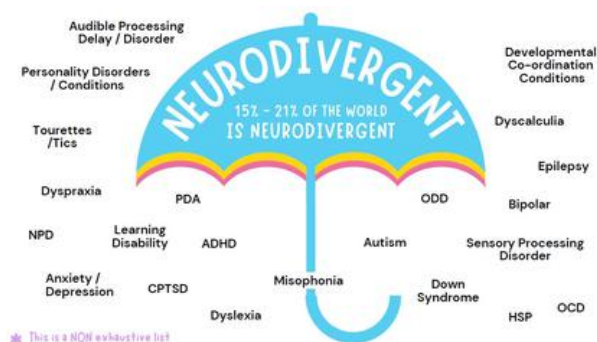
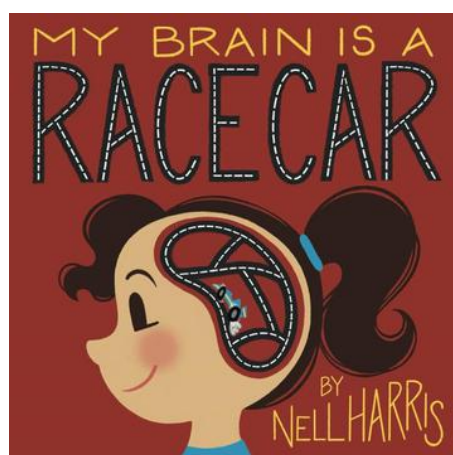
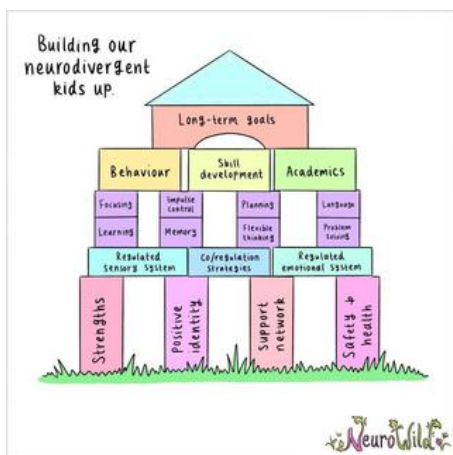
One of the presenters Nell Harris (South Australian author/illustrator of children's books about neurodiversity) spoke about Neuroaffirming classrooms and explained some 'Neuro' terms. 'Neurodivergent' is a person whose brain works differently from what is considered the majority brain type. 'Neuroaffirming' is used in the context of believing in a strengths-based approach to developmental differences, and aims to provide support that affirms the child's neurodivergent identity. This was a new word for me! Neuroaffirming practice embraces the differences in ability and these are not deficits to be fixed, rather strengths to be nurtured. Nell passionately talked about how to work towards a neuroaffirming world and I found it very important; we as a society 'AVAIL' ourselves to neurodiversity - Appreciate, Validate, Accommodate, Include and Learn. Some of her support ideas for Neuroaffirming classrooms included:

- Alternative seating options
- Calm area or corner/ A sensory retreat
- Natural, varied lighting
- Visual aids, timetables, instructions, reminders
- Alternative ways to present and communicate
- Say what you WANT done, NOT what you don't want
- Breaks, stretches, walks, 'step away' resets
- Opportunities for educators to continually learn and grow

Our school continues to learn together and work towards a neuroaffirming and inclusive future!

If you have any questions or concerns, please come and have a chat anytime.

**Kyoko Miyamoto**



# Around the school

## ROOM 14

### MATHS

In Maths we have been consolidating our knowledge of fractions. We have been working on understanding the role of the numerator and denominator, that fractions always need to have equal parts, and how to represent halves, quarters and eighths with area, length and set models.



### LITERACY

In Literacy we are learning to understand and use rhyme structure to write poems. This week we focused on the ABCB structure where only the second and fourth lines rhyme. We used the commonly known poem starter 'Roses are Red/Violets are blue' to inspire our creative works. I'm sure you can agree we have some very creative and funny students in our class!

Roses are red  
violets are blue  
SONIC is speedy  
but not as speedy as you

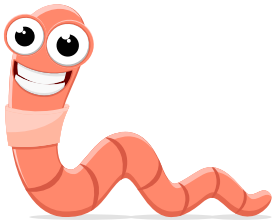
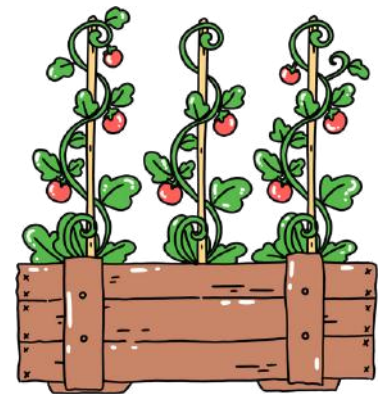
ice cream is cold  
chocolate is sweet  
you are like hot chocolate  
warm and sweet

B  
A Ice cream is | Chocolate is Sweet  
B I like cheese cake  
C I like cheese cake  
B but cheese smells like feet

(A) Ice cream is cold  
(B) Chocolate is sweet  
(C) oh no I dropped my ice cream  
(B) ~~on my mums feet~~ and now i'm get a heat  
it landed on my mums feet

## ROOM 14

As part of our garden Inquiry project this week, we installed a worm farm in our class room. This will enable us to watch how worms decompose organic matter to create rich healthy soil. We will also install a worm farm in our garden area. Additionally, we measured our garden beds and investigated how much space each of our plants would need between them to grow healthy and strong. Next week we will look at how many of each plant we can fit into each garden bed according to their space requirement, and also how we can use companion planting to benefit our vegetables.



# Around the school

## Term 4 Calendar Willsden Primary School

	Monday	Tuesday	Wednesday	Thursday	Friday	Sat/Sun
W k 1	14/10	15/10	16/10	17/10	18/10	19/10 & 20/10
W k 2	21/10 SAPSASA Girls Footy State Carnival-Kurt	22/10	23/10 PASS Drama Performance - Year 6's Miss Clare & Marsha	24/10	25/10	26/10 & 27/10
W k 3	28/10	29/10 11.40-1.10pm Science lesson for Year 6's - Miss Clare & Marsha	30/10	31/10	1/11 SAPSASA Volleyball - Selected students Miss Clare & Marsha	2/11 & 3/11
W k 4	4/11 Parent Voice Swimming Lessons	5/11	6/11	7/11	8/11	9/11 & 10/11
W k 5	11/11 Swimming Lessons	12/11	13/11 Books in Homes Book Giving Assembly - Chloe	14/11	15/11	16/11 & 17/11
w k 6	18/11	19/11	20/11	21/11	22/11 Student Free Day	23/11 & 24/11
w k 7	25/11	26/11	27/11	28/11	29/11 9.30-12pm Cricket sessions	30/11 & 1/12
W k 8	2/12 Parent Voice	3/12	4/12 Family Night	5/12	6/12 9.30-12pm Cricket sessions	7/12 & 8/12
W k 9	9/12 Year 6 Graduation Full Day PASS Transition Visit - Year 6s	10/12 Full Day PASS Transition Visit - Year 6s	11/12	12/12 Splash Day	13/12 Last Day of Term 9.30-12pm Cricket sessions Class parties	14/12 & 15/12 School Holidays